

MSHCP Amendment: Developer Focus Group Implementation and Cost Reduction Measures

Kimberley Goodwin
February 6, 2025



MOJAVEMAX.COM



desert conservation
PROGRAM



CENTRALIZED APPROACH



Search OpenDoor Advanced Search

Current Tool: Select Property
Coords in: State Plane ft
X: 527541 Y: 26843442
Flight Date: Most Current Flight
Current View: Aerial Imagery Only
1: 250,000

Your feedback helps improve OpenWeb

For improved performance and additional functionality, visit this site using Chrome or Edge

Tip: Pressing 'ctrl' and 'F5' keys simultaneously performs a "force reload", allowing you to enjoy new features as released

Data Disclaimer

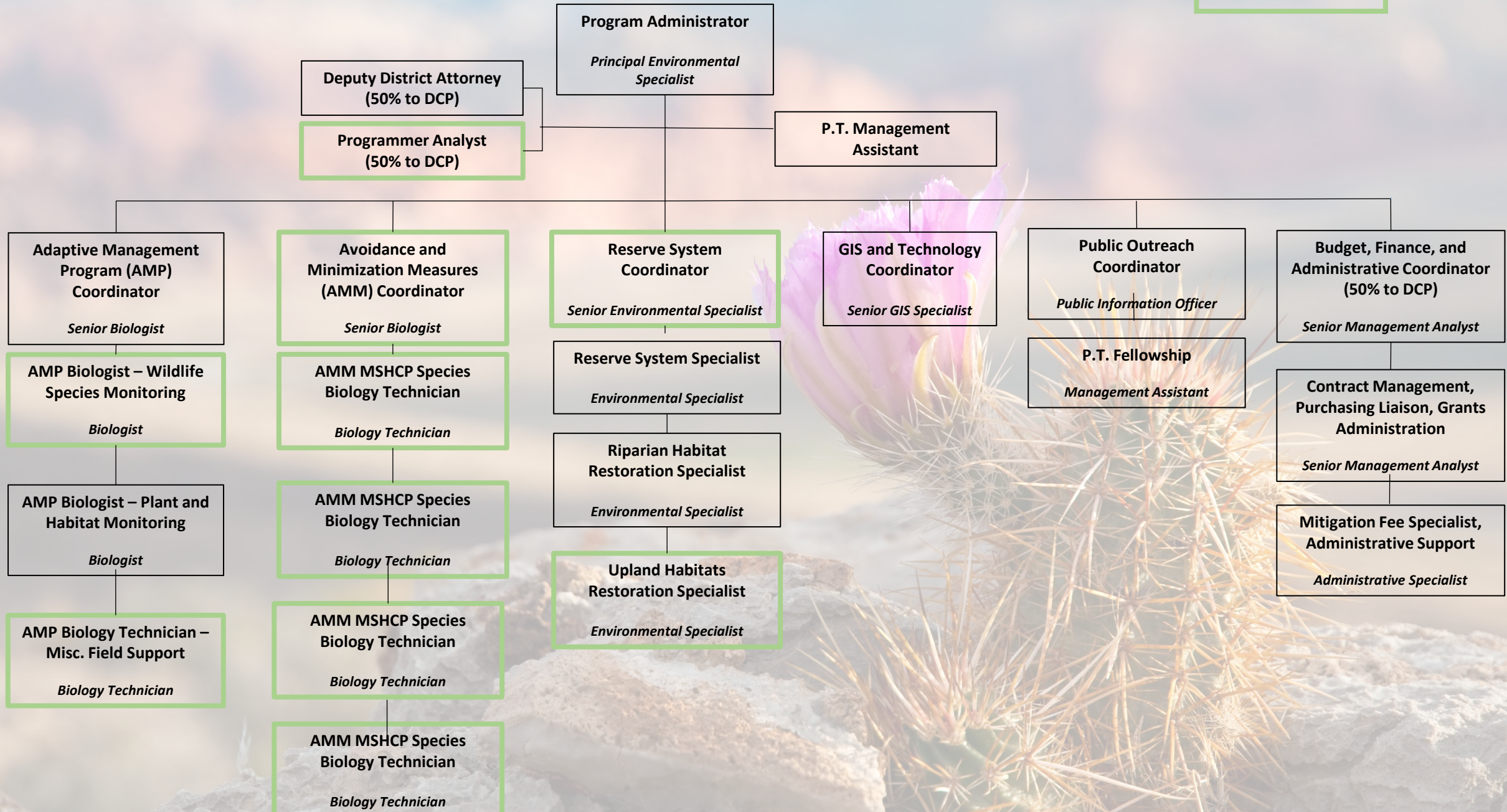
Welcome to OpenDoor!

Due to continuous development activity throughout Clark County, this data is for reference only. The information is presented solely for the convenience of the citizens of Clark County. Specific questions are to be referred to the appropriate County Department and/or municipality.

THE MAPS AND DATA ARE PROVIDED WITHOUT WARRANTY OF ANY KIND, EXPRESSED OR IMPLIED.

STAFFING

Positions Added



OTHER COST SAVINGS



- Reserve System–
 - Acquisition vs. Mitigation on Federal Lands
 - Law Enforcement
- Monitoring – Use of Models and New Technologies
- Grant Funds



CURRENT FEE

Adopted into NRS in 1991

Does not allow adjustments for inflation

Why has it worked for this long?

- Rapid Development
- SNPLMA
- Interest Rates

